



LOBSTER

WELCOME

Welcome to the 4-H Lobster Project! Please read through this guide carefully, as it contains information and suggestions that are important for your project. **4-H leaders can obtain a Leader Project Guide and other resources from the PEI 4-H Office.** Hopefully you, as a member, will “Learn to do by Doing” through hands-on activities that will encourage learning and enjoyment. If you have any questions, contact your District 4-H Officer or your 4-H project leader.

4-H YEAR COMPLETION

You complete a project by:

- completing the project Achievement Day requirements
- completing a communication project
- completing a community project
- completing an agriculture awareness project
- taking part in Achievement Day

You must complete all of the listed aspects in order to show at Fairs and Exhibitions.




ACHIEVEMENT DAY REQUIREMENTS	
Lobster Trap (<i>without ballast</i>)*	80
Poster (<i>showing how the trap was made</i>)**	20
	100

EXHIBITION REQUIREMENT
Lobster Trap (<i>without ballast</i>)

*You may choose to build a “kitchen and parlour” trap design, as illustrated in the Leader’s Project Manual or a design of your own choice. You can also choose to make a half scale model lobster trap, this is also acceptable. Remember, however, that whichever design you choose, if you wish to enter into competition at the fairs, do not include the ballast in the trap.

**When creating the poster requirement, use a full sheet of Bristol board. The poster should show how the trap was made. You can draw the steps or use photographs. The 4-H poster manual, available from the Provincial 4-H Office, will provide you with plenty of hints on making a poster.



Ages for 4-H members as of January 1st of the 4-H year:
 Junior: 9-11 years
 Intermediate: 12-14 years
 Senior: 15-21 years

Check out the PEI 4-H Web Site
www.pei4h.pe.ca

Lobster Traps

There are many different types of lobster traps. The most common trap to PEI fishers is the “kitchen and parlour” type trap. This trap has a flat bottom and the sides and top are in the form of an arch or bow. These traps have two funnel shaped openings through which lobsters pass into the “kitchen” in their search for food. Inside the trap, another opening leads to a section known as the parlour. Few lobsters are able to escape once in the trap. To make traps sink and settle right side up, they are weighted with flat stones or concrete.

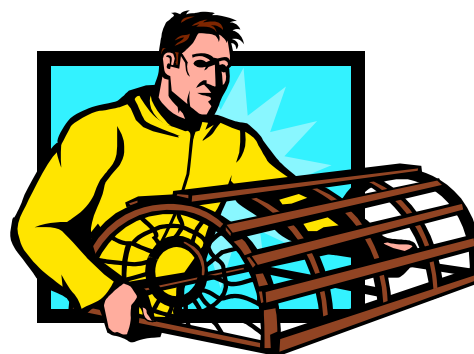


Lobster Low Down

Lobsters are invertebrates, and have a tough exoskeleton, which protects them. Like most arthropods, lobsters must molt in order to grow, leaving them vulnerable at this time. During the molting process, some species may experience a change in colour.

Lobsters live on rocky, sandy, or muddy bottoms from the shoreline to beyond the edge of the continental shelf. They usually live singly in crevices or in burrows under rocks.

Lobsters typically eat live food, consisting of fish, mollusks, other crustaceans, worms and some plant life. Occasionally they will scavenge if necessary, and may resort to cannibalism in captivity; however this has not been observed in the wild.



BE A GOOD SPORT!

In the spirit of learn to do by doing, all those involved in 4-H are encouraged to practice good sportsmanship, use common sense at all 4-H activities and the work in any 4-H project should be the member's own work.

HELPFUL RESOURCES!

www.gov.pe.ca/af

www.lobsterscience.ca

<http://collections.ic.gc.ca/peifisheries>

www.dfo-mpo.gc.ca

A variety of books and a videos

The End of the Nancy J - (21 minutes)

Tomorrow is Too Late - (28 minutes)

Lobster Country - (20 minutes)

Lobster and the Sea - (27 minutes)

are available at the PEI 4-H Office which can be borrowed for a two week loan period. To book these, call 368-4833 or drop by the PEI 4-H Office at 40 Enman Crescent, Charlottetown.

Quick Fact

The lobster fishery is the major source of income for PEI fishers. PEI fishers catch approximately 20% of the Canadian Landings.

Did you know?

It is the body or carapace of the lobster that is measured to determine if it is of legal size. At present these carapace sizes are 63.5 mm along the north shore, 65.1 mm off the south east coast, and 66.7 in western Prince Edward Island. To ensure that enough lobsters are able to reproduce before being caught, these and other measures are periodically reviewed.

MATERIALS USED IN A LOBSTER TRAP

- 1 BALL OF FINE LOBSTER TWINE
- 1 BALL OF COARSE LOBSTER TWINE
- 5 CM (2 IN.) OF MESH CARE OR GAUGE
- TWINE NEEDLE
- 1.8 OR 2.1 METERS OF 3.2 CM X 5.1 CM (6 OR 7 FEET OF 1 1/4" X 2")
HARDWOOD FOR CROSS SILLS
- 3 TOUGH FLEXIBLE SAPLINGS FOR BOWS (PREFERABLY SPRUCE)
(3 ASSEMBLED BOWS AND CROSS SILLS COULD BE USED)
- 2 HOOPS (NARROW STRIPS OF WOOD OR PLASTIC)
- 25 (76 CM OR 30 IN.) LATHS OR PLASTIC COATED WIRE MESH
- 2.5 CM (1 IN.) GALVANIZED NAILS
- 3.8 CM (1 1/2 IN.) GALVANIZED NAILS
- 1.5 METERS OF 6.4 CM X 1.9 CM (5 FEET OF 2 1/2" X 3/4")
HARDWOOD FOR PALINGS
- 30 CM (12 IN.) LEATHER STRIP
- 3.7 METERS OF 0.8 CM (12 FEET OF 5/16 IN.) POLYETHYLENE ROPE
- 1 WOODEN LATH CONTAINING 3 ESCAPE HOLES, 46 MM IN DIAMETER
(1 3/4") OPTIONAL

Biodegradable Panel

Lobster traps are built to last as long as possible and retain the legal sized lobsters which it catches. However, this can become a problem if the trap is lost due to ice, weather or accident. Without some means to make it stop fishing, lobster may continue to be caught for years after the trap is lost on the bottom of the sea. For this reason, fishers make their traps so that at least one section is biodegradable, which means it will break down in a short time and stop retaining lobsters. Many traps used on P.E.I., because they are made using woods which rot fairly quickly in water, are naturally biodegradable. For others made of more durable materials such as wire and plastic, a plastic panel 3" x 6" is attached to the parlor wall with soft metal or string which will break down over time. When this happens, the panel falls out and the trap will no longer hold lobsters. The diagram below shows a plastic panel which can be used as an escape mechanism and a biodegradable panel at the same time.

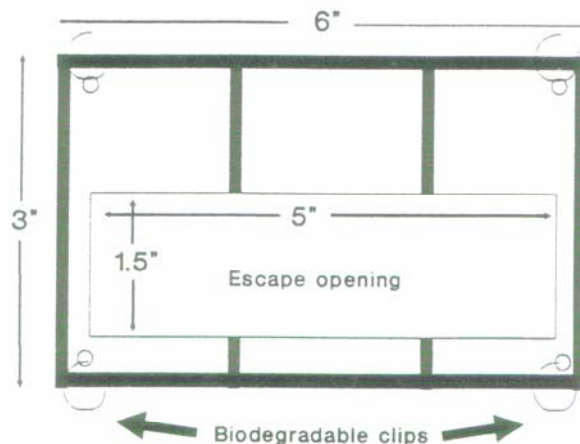
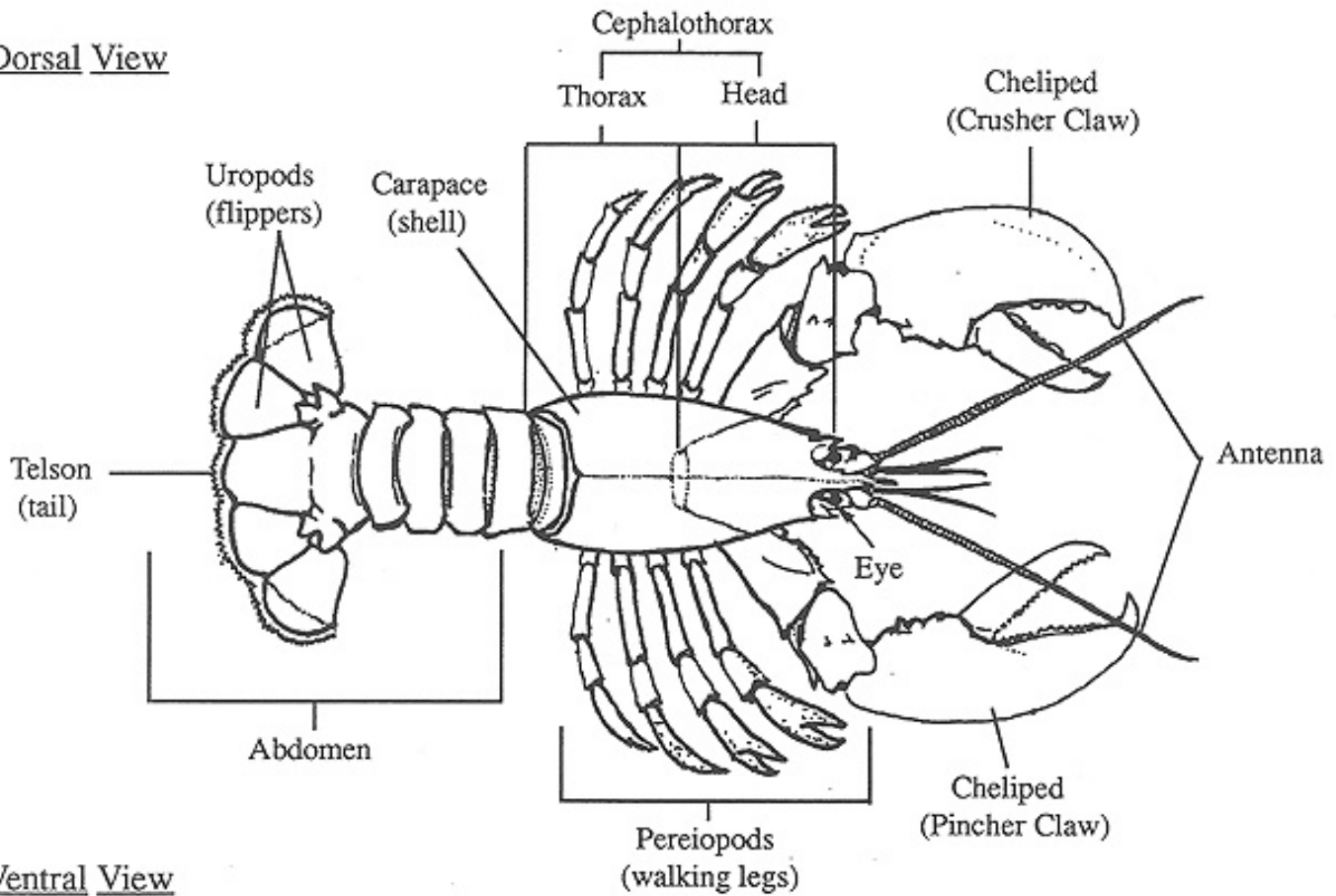


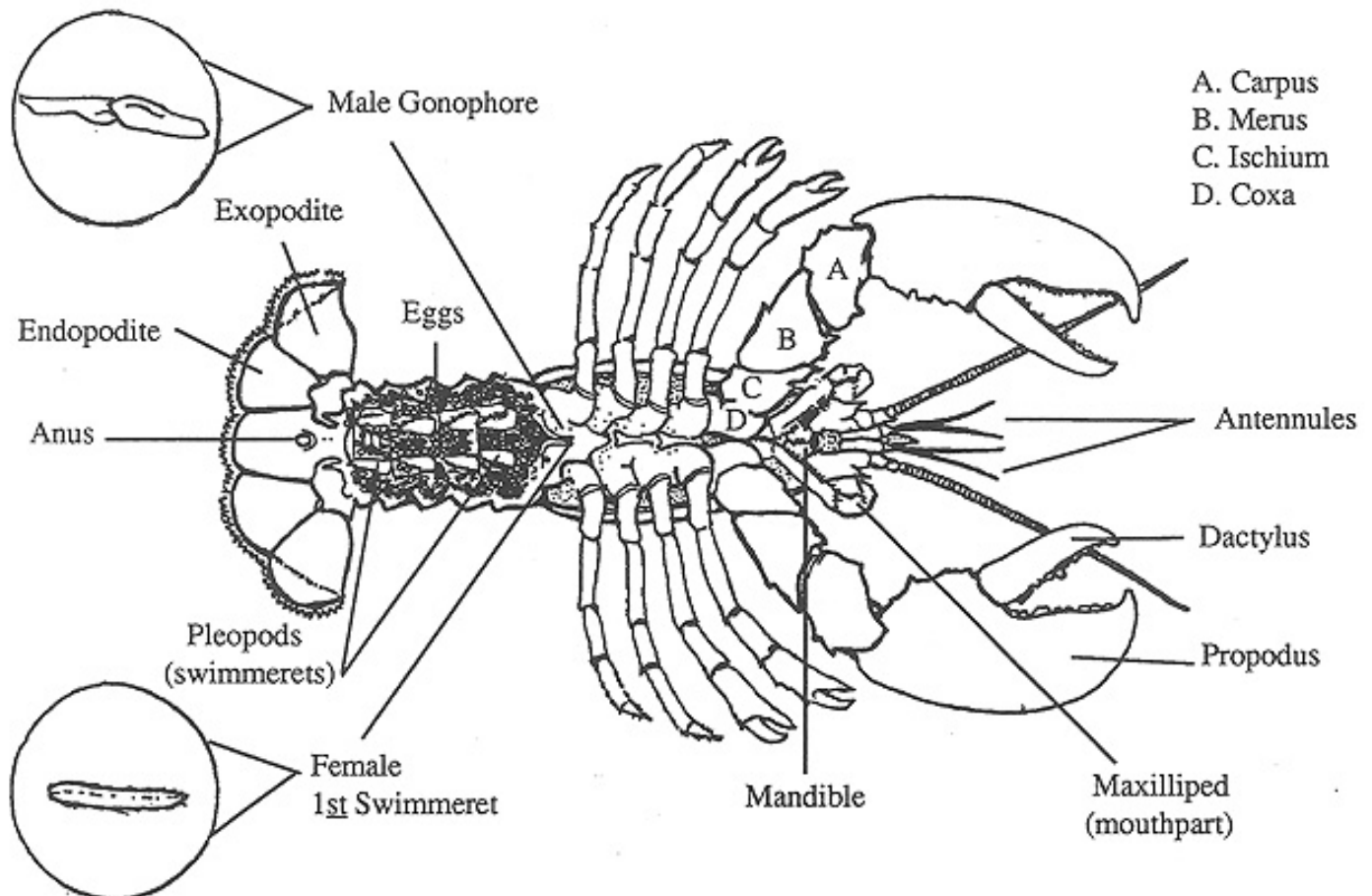
Figure: Escape mechanism/biodegradable panel

Lobster

Dorsal View

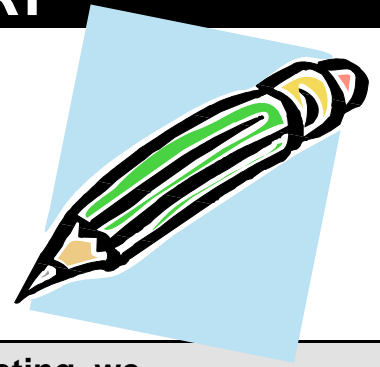


Ventral View



PROJECT MEETINGS DIARY

Most projects will require at least six to eight project meetings to complete the project.



Meeting Date	Location	Time	At this meeting, we...

Community and Agriculture Awareness Projects

COMMUNITY PROJECT

Each year you are encouraged to provide a service to your community as a 4-H member. This introduces you to the responsibilities of citizenship. You must participate in your club's plan for a community project and you should have a role to play. Describe your involvement with your club's community project this year.



Our Community Project was _____

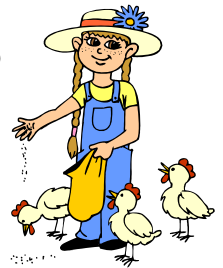
I helped by _____

It was beneficial because _____

I learned _____

AGRICULTURE AWARENESS PROJECT

Agriculture is one of PEI's main industries. You are expected to participate with your club to complete a project (or provide a service) which helps your club or others become aware of the importance of agriculture in our lives. As in the community project, you should actively participate.



Our Agricultural Awareness Project was _____

I helped by _____

It was beneficial because _____

I learned _____